

Scaled data based on original data using
LM-79-08 Approved Method: Electrical and Photometric Measurements of Solid-
State Lighting Products

Test Report Prepared for
Cooper Lighting Solutions
(formerly Eaton)

Brand: INVUE

Report Number: P150525

Luminaire Tested: **VWM-F04-LED-E1-SL3-HSS**

Issue Date: 03/03/2020

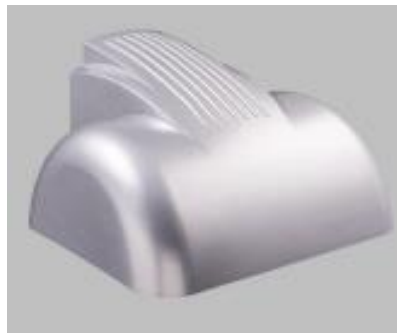
Test Information

Test Method: LM-79-08
Report Number: P150525
REPORT IS SCALED FROM IESNA LM-79-08 TEST DATA (P33727)
Test Lab: INNOVATION CENTER-P3
Issue Date: 03/03/2020
Manufacturer: COOPER LIGHTING SOLUTIONS (FORMERLY EATON)
Product Line: INVUE
Catalog Number: VWM-F04-LED-E1-SL3-HSS
Description: VISION WALL MEDIUM LED LUMINAIRE
(4) LIGHTBARS WITH AccuLED OPTICS - TYPE 3 W/ SPILL LIGHT CONTROL AND HOUSE SIDE SHIELD
Light Source: (28) 4000K CCT, 70 CRI LEDs
Ballast/Driver: -

Summary

Lumens per Lamp: N/A
Luminaire Lumens: 5725.2 lumens
Efficiency: N/A
Efficacy: 56.0 lumens/watt
Luminous Opening: Rectangular (W 0.67' x L: 1' x H: 0')
IES Classification: Type III - Short - Non-Cutoff
BUG Rating: B0 - U0 - G2

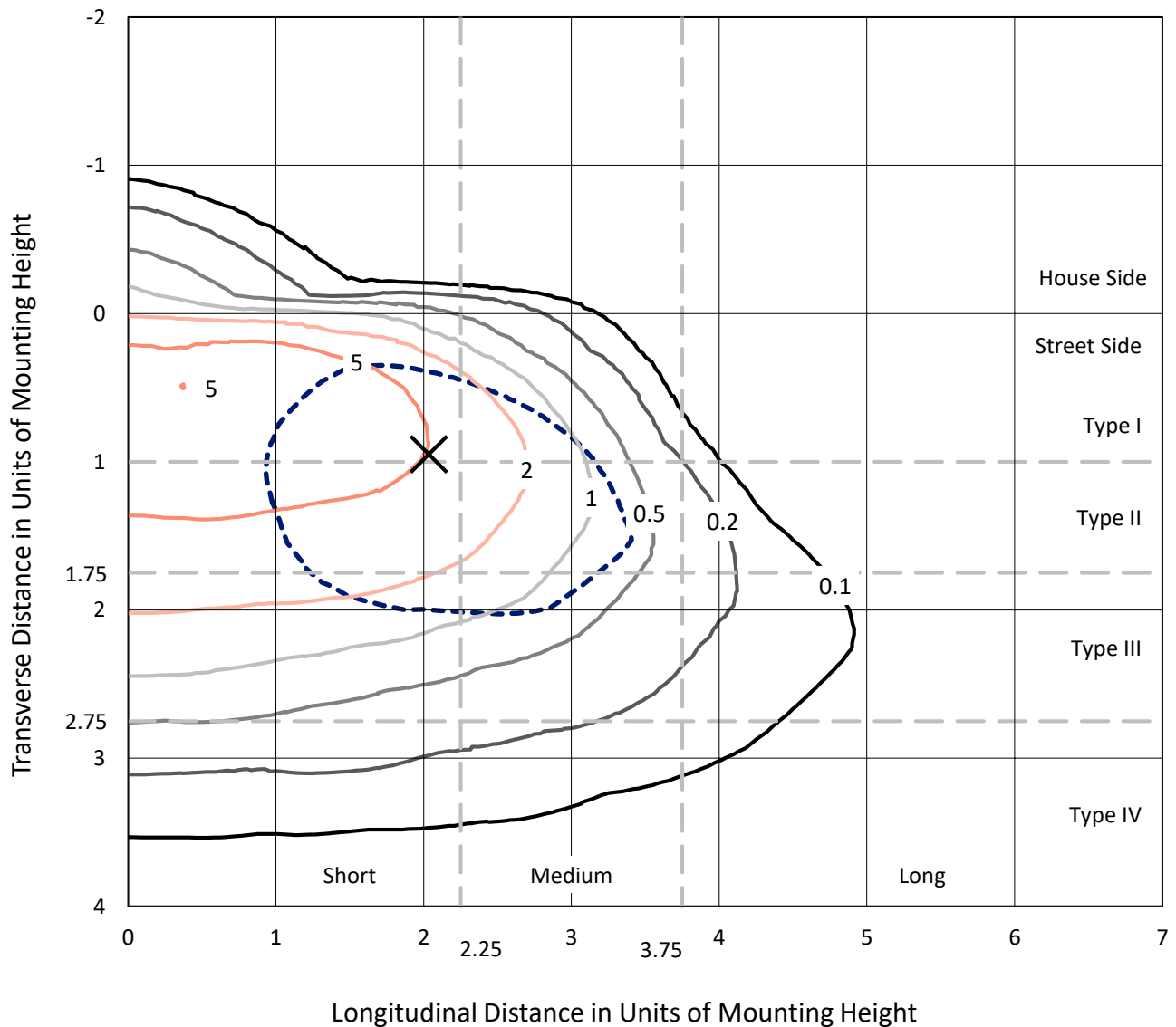
Input Watts (W): 102.2
Input Voltage (V): NR
Input Current (Ain): NR
Voltage Rise (V): NR
Power Factor: NR
Total Harmonic Distortion (THDi): NR
Frequency (hertz): 60
Stabilization Time: NR
Operation Time: NR
Ambient Temperature (°C): NR
Test Distance: 25 FT



REPORT NUMBER: P150525
 CATALOG NUMBER: VWM-F04-LED-E1-SL3-HSS

Iso-Footcandle Lines of Horizontal Illumination

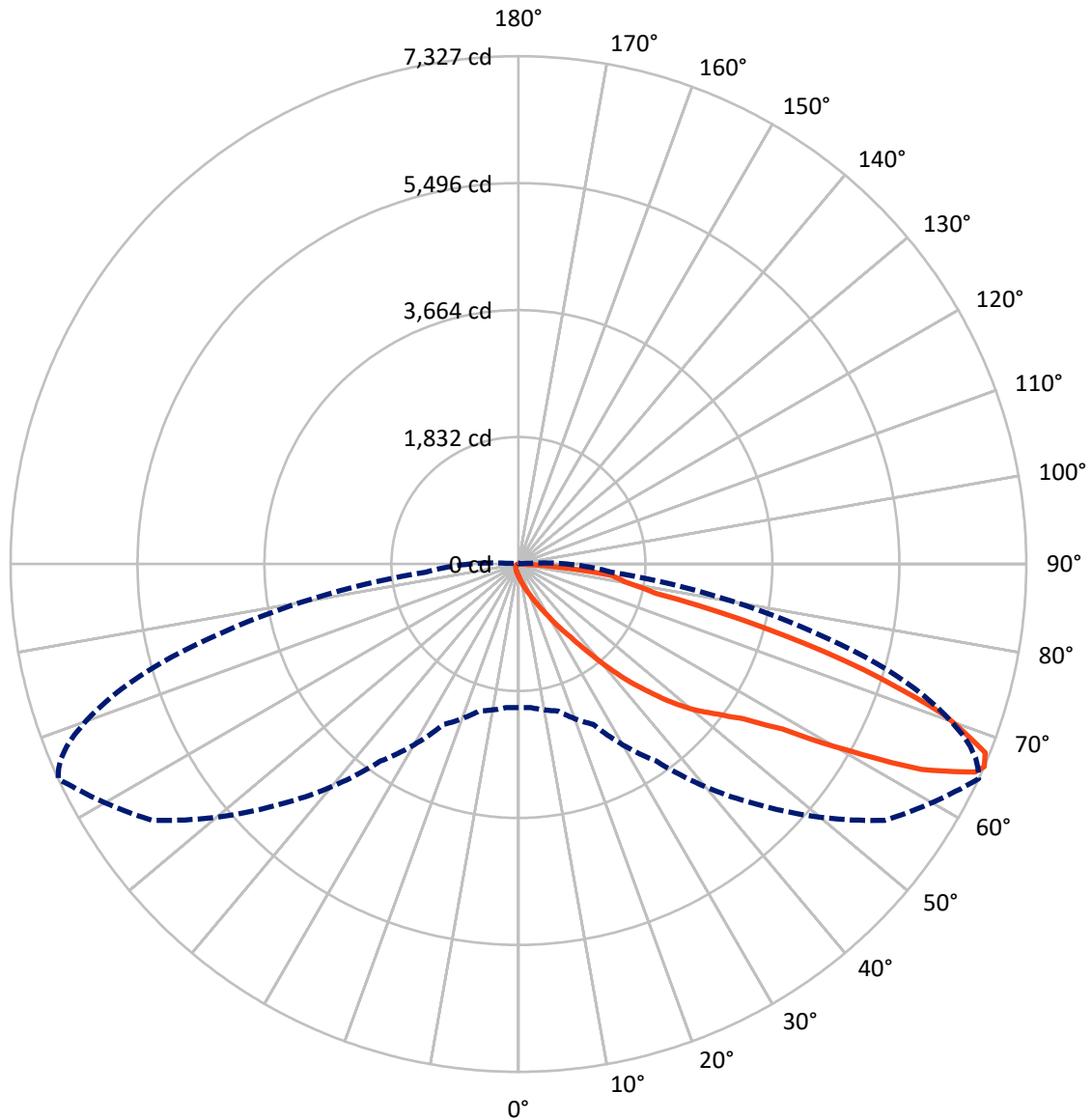
✕ Max cd
 - - - 1/2 Max cd



Based on 10 foot mounting height. Maximum calculated value = 9.4 fc
 Type III - Short - Non-Cutoff

REPORT NUMBER: P150525
CATALOG NUMBER: VWM-F04-LED-E1-SL3-HSS

Luminous Intensity Polar Plot



— Vertical Plane Through 65-Deg Lateral - - - Horizontal Cone Through 66-Deg Vertical

REPORT NUMBER: P150525

CATALOG NUMBER: VWM-F04-LED-E1-SL3-HSS

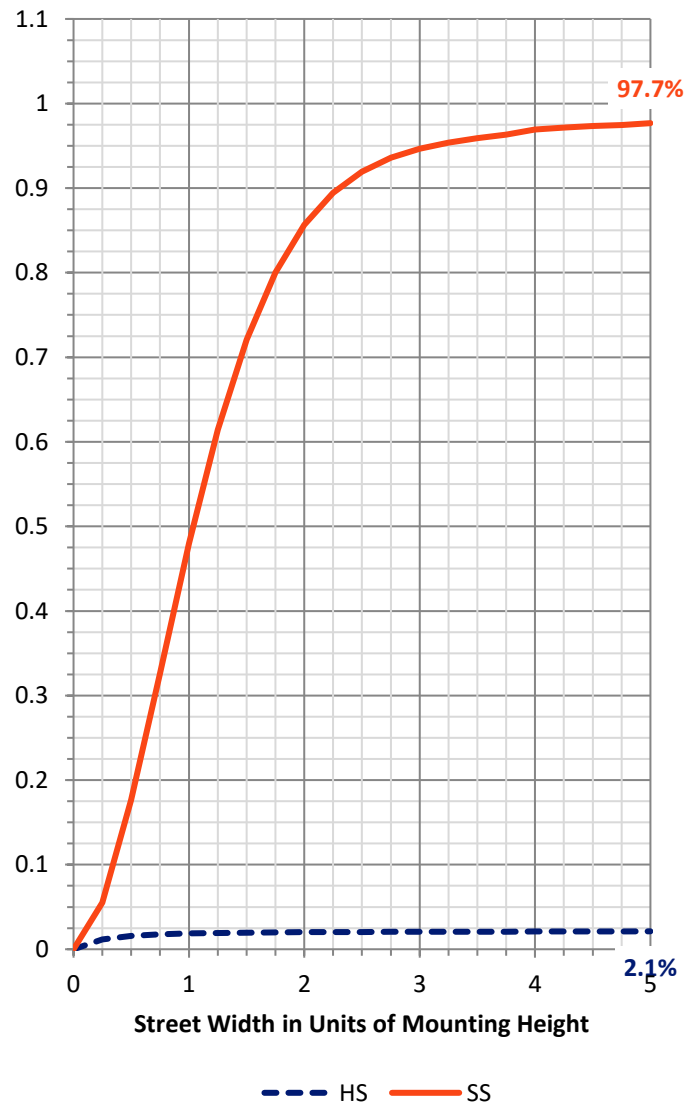
FLUX DISTRIBUTION:

| | | Downward | Upward | Total |
|--------------------|-----------|----------|--------|--------|
| House Side | Lumens | 124.0 | 0.0 | 124.0 |
| | % Fixture | 2.2 | 0.0 | 2.2 |
| Street Side | Lumens | 5601.2 | 0.0 | 5601.2 |
| | % Fixture | 97.8 | 0.0 | 97.8 |
| Total | Lumens | 5725.2 | 0.0 | 5725.2 |
| | % Fixture | 100.0 | 0.0 | 100.0 |

Coefficient of Utilization

ZONAL LUMENS:

| Zone | Lumens | % Fixture |
|-----------|--------|-----------|
| 0°-10° | 19.3 | 0.3 |
| 10°-20° | 82.0 | 1.4 |
| 20°-30° | 176.9 | 3.1 |
| 30°-40° | 377.8 | 6.6 |
| 40°-50° | 835.5 | 14.6 |
| 50°-60° | 1416.0 | 24.7 |
| 60°-70° | 1889.5 | 33.0 |
| 70°-80° | 832.3 | 14.5 |
| 80°-90° | 95.9 | 1.7 |
| 90°-100° | 0.0 | 0.0 |
| 100°-110° | 0.0 | 0.0 |
| 110°-120° | 0.0 | 0.0 |
| 120°-130° | 0.0 | 0.0 |
| 130°-140° | 0.0 | 0.0 |
| 140°-150° | 0.0 | 0.0 |
| 150°-160° | 0.0 | 0.0 |
| 160°-170° | 0.0 | 0.0 |
| 170°-180° | 0.0 | 0.0 |
| 0°-90° | 5725.2 | 100.0 |
| 0°-180° | 5725.2 | 100.0 |



REPORT NUMBER: P150525

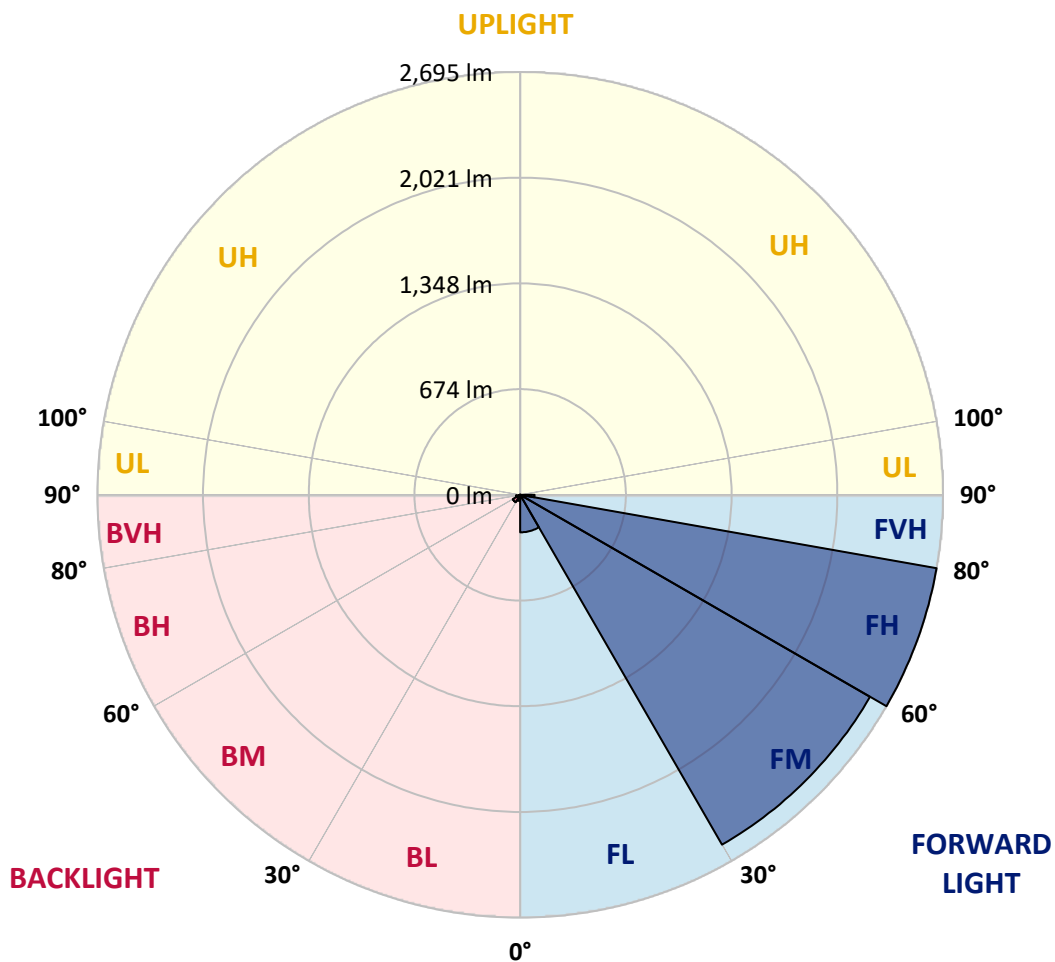
CATALOG NUMBER: VWM-F04-LED-E1-SL3-HSS

LUMINAIRE CLASSIFICATION SYSTEM LUMEN TABLE AND BUG RATING:

| Zone | Lumens | % Fixture | Zone Rating/Lumen Limit | | |
|----------------|--------|-----------|-------------------------|------|---------|
| | | | B | U | G |
| FL (0°-30°) | 239.1 | 4.2 | | | |
| FM (30°-60°) | 2574.8 | 45.0 | | | |
| FH (60°-80°) | 2695.2 | 47.1 | | | G2/5000 |
| FVH (80°-90°) | 92.0 | 1.6 | | | G1/100 |
| BL (0°-30°) | 39.1 | 0.7 | B0/110 | | |
| BM (30°-60°) | 54.5 | 1.0 | B0/220 | | |
| BH (60°-80°) | 26.6 | 0.5 | B0/110 | | G0/110 |
| BVH (80°-90°) | 3.8 | 0.1 | | | G0/10 |
| UL (90°-100°) | 0.0 | 0.0 | | U0/0 | |
| UH (100°-180°) | 0.0 | 0.0 | | U0/0 | |

BUG Rating: B0-U0-G2

Type III Short





REPORT NUMBER: P150525

CATALOG NUMBER: VWM-F04-LED-E1-SL3-HSS

CANDELA DISTRIBUTION (FULL):

| | 0° | 5° | 15° | 25° | 35° | 45° | 55° | 65° | 66° | 67° | 68° |
|-------|--------|--------|--------|--------|--------|--------|--------|--------|--------|--------|--------|
| 0° | 172.8 | 172.8 | 172.8 | 172.8 | 172.8 | 172.8 | 172.8 | 172.8 | 172.8 | 172.8 | 172.8 |
| 2.5° | 217.9 | 216.8 | 212.4 | 212.4 | 205.8 | 201.4 | 195.9 | 190.4 | 190.4 | 189.3 | 188.2 |
| 5° | 288.4 | 281.8 | 280.7 | 268.6 | 258.7 | 244.4 | 231.1 | 213.5 | 211.3 | 209.1 | 208.0 |
| 7.5° | 366.5 | 365.4 | 355.5 | 341.2 | 321.4 | 295.0 | 268.6 | 240.0 | 235.5 | 233.3 | 228.9 |
| 10° | 467.8 | 462.3 | 449.1 | 424.9 | 395.2 | 359.9 | 317.0 | 271.9 | 266.4 | 262.0 | 259.8 |
| 12.5° | 564.7 | 554.8 | 547.0 | 516.2 | 478.8 | 427.1 | 375.3 | 310.4 | 306.0 | 300.5 | 291.7 |
| 15° | 654.9 | 646.1 | 632.9 | 606.5 | 564.7 | 499.7 | 439.2 | 359.9 | 348.9 | 341.2 | 334.6 |
| 17.5° | 725.4 | 719.9 | 704.4 | 674.7 | 629.6 | 572.4 | 499.7 | 410.6 | 401.8 | 391.8 | 379.7 |
| 20° | 792.5 | 784.8 | 760.6 | 719.9 | 671.4 | 627.4 | 571.3 | 476.6 | 464.5 | 452.4 | 439.2 |
| 22.5° | 856.3 | 848.6 | 809.0 | 741.9 | 690.1 | 671.4 | 651.6 | 551.5 | 532.7 | 522.8 | 509.6 |
| 25° | 945.5 | 929.0 | 867.4 | 760.6 | 691.2 | 705.5 | 739.7 | 648.3 | 630.7 | 616.4 | 595.5 |
| 27.5° | 1065.5 | 1043.5 | 946.6 | 788.1 | 695.6 | 743.0 | 840.9 | 766.1 | 747.4 | 730.9 | 707.8 |
| 30° | 1200.9 | 1186.6 | 1071.0 | 854.1 | 727.6 | 798.0 | 954.3 | 915.8 | 893.8 | 874.0 | 846.4 |
| 32.5° | 1337.4 | 1317.5 | 1203.1 | 979.6 | 813.4 | 904.8 | 1096.3 | 1089.7 | 1061.1 | 1042.4 | 1012.6 |
| 35° | 1457.3 | 1447.4 | 1362.7 | 1185.5 | 1009.3 | 1091.9 | 1285.6 | 1293.3 | 1268.0 | 1248.2 | 1215.2 |
| 37.5° | 1538.8 | 1538.8 | 1522.3 | 1406.7 | 1320.8 | 1382.5 | 1564.1 | 1565.2 | 1539.9 | 1494.8 | 1478.2 |
| 40° | 1580.6 | 1592.7 | 1652.2 | 1674.2 | 1669.8 | 1749.0 | 1929.5 | 1909.7 | 1888.8 | 1865.7 | 1810.7 |
| 42.5° | 1666.5 | 1677.5 | 1804.0 | 1955.9 | 2055.0 | 2159.6 | 2284.0 | 2277.3 | 2252.0 | 2210.2 | 2159.6 |
| 45° | 1811.8 | 1826.1 | 1976.9 | 2217.9 | 2421.5 | 2570.1 | 2649.4 | 2618.6 | 2593.2 | 2553.6 | 2527.2 |
| 47.5° | 1996.7 | 2024.2 | 2194.8 | 2493.1 | 2738.5 | 2984.0 | 3066.5 | 2985.1 | 2963.1 | 2932.3 | 2889.3 |
| 50° | 2193.7 | 2220.1 | 2401.7 | 2742.9 | 3020.3 | 3313.1 | 3450.7 | 3313.1 | 3281.2 | 3271.3 | 3222.8 |
| 52.5° | 2364.3 | 2386.3 | 2561.3 | 2935.6 | 3236.1 | 3579.5 | 3779.8 | 3598.2 | 3575.1 | 3542.1 | 3506.8 |
| 55° | 2465.6 | 2483.2 | 2647.2 | 3028.0 | 3382.5 | 3819.4 | 4097.9 | 3938.3 | 3904.2 | 3891.0 | 3840.3 |
| 57.5° | 2499.7 | 2517.3 | 2664.8 | 3040.1 | 3461.7 | 4038.5 | 4484.3 | 4489.8 | 4449.0 | 4401.7 | 4386.3 |
| 60° | 2499.7 | 2519.5 | 2643.9 | 3010.4 | 3538.8 | 4271.8 | 4999.4 | 5458.4 | 5370.3 | 5361.5 | 5305.4 |
| 62.5° | 2396.2 | 2414.9 | 2540.4 | 2919.1 | 3642.2 | 4586.6 | 5717.0 | 6527.2 | 6501.8 | 6444.6 | 6352.1 |
| 65° | 2171.7 | 2182.7 | 2306.0 | 2685.7 | 3602.6 | 4876.1 | 6338.9 | 7238.2 | 7197.5 | 7085.2 | 6966.3 |
| 66° | 2070.4 | 2079.2 | 2194.8 | 2552.5 | 3472.7 | 4915.7 | 6449.0 | 7327.4 | 7260.2 | 7165.6 | 7031.3 |
| 67.5° | 1924.0 | 1939.4 | 2020.9 | 2304.9 | 3161.2 | 4778.1 | 6379.7 | 7264.6 | 7206.3 | 7091.8 | 6957.5 |
| 70° | 1284.5 | 1273.5 | 1560.8 | 1768.8 | 2408.3 | 3893.2 | 5723.6 | 6522.7 | 6523.8 | 6469.9 | 6416.0 |
| 72.5° | 609.8 | 616.4 | 700.0 | 1088.6 | 1576.2 | 2601.0 | 4555.8 | 5206.3 | 5281.2 | 5184.3 | 5117.2 |
| 75° | 438.1 | 448.0 | 498.6 | 665.9 | 940.0 | 1560.8 | 2953.2 | 3641.1 | 3643.3 | 3471.6 | 3318.6 |
| 77.5° | 127.7 | 133.2 | 187.1 | 410.6 | 704.4 | 1053.4 | 1696.2 | 2024.2 | 1976.9 | 1853.6 | 1738.0 |
| 80° | 52.8 | 52.8 | 55.0 | 131.0 | 282.9 | 715.5 | 1186.6 | 1558.6 | 1553.1 | 1505.8 | 1437.5 |
| 82.5° | 19.8 | 20.9 | 26.4 | 53.9 | 67.1 | 176.1 | 791.4 | 1352.8 | 1349.5 | 1282.3 | 1233.9 |
| 85° | 2.2 | 2.2 | 6.6 | 23.1 | 25.3 | 33.0 | 158.5 | 596.6 | 593.3 | 596.6 | 522.8 |
| 87.5° | 0.0 | 0.0 | 1.1 | 2.2 | 3.3 | 4.4 | 6.6 | 23.1 | 25.3 | 24.2 | 22.0 |
| 90° | 0.0 | 0.0 | 0.0 | 0.0 | 0.0 | 0.0 | 0.0 | 0.0 | 0.0 | 0.0 | 0.0 |



REPORT NUMBER: P150525

CATALOG NUMBER: VWM-F04-LED-E1-SL3-HSS

CANDELA DISTRIBUTION (continued):

| | 69° | 70° | 71° | 72° | 73° | 74° | 75° | 76° | 77° | 78° | 79° |
|-------|--------|--------|--------|--------|--------|--------|--------|--------|--------|--------|--------|
| 0° | 172.8 | 172.8 | 172.8 | 172.8 | 172.8 | 172.8 | 172.8 | 172.8 | 172.8 | 172.8 | 172.8 |
| 2.5° | 188.2 | 186.0 | 186.0 | 184.9 | 184.9 | 184.9 | 183.8 | 182.7 | 182.7 | 181.6 | 180.5 |
| 5° | 205.8 | 203.6 | 202.5 | 200.3 | 199.2 | 198.1 | 195.9 | 194.8 | 192.6 | 191.5 | 190.4 |
| 7.5° | 226.7 | 222.3 | 221.2 | 217.9 | 214.6 | 212.4 | 210.2 | 206.9 | 204.7 | 200.3 | 199.2 |
| 10° | 253.2 | 247.7 | 243.3 | 238.9 | 235.5 | 230.0 | 226.7 | 222.3 | 217.9 | 214.6 | 211.3 |
| 12.5° | 287.3 | 279.6 | 273.0 | 268.6 | 260.9 | 254.3 | 247.7 | 244.4 | 235.5 | 231.1 | 225.6 |
| 15° | 324.7 | 315.9 | 308.2 | 299.4 | 293.9 | 282.9 | 274.1 | 264.2 | 259.8 | 252.1 | 243.3 |
| 17.5° | 373.1 | 358.8 | 346.7 | 337.9 | 326.9 | 315.9 | 306.0 | 296.1 | 282.9 | 274.1 | 263.1 |
| 20° | 424.9 | 412.8 | 396.3 | 380.8 | 367.6 | 354.4 | 340.1 | 326.9 | 314.8 | 300.5 | 287.3 |
| 22.5° | 490.9 | 473.3 | 453.5 | 438.1 | 420.5 | 406.2 | 386.3 | 368.7 | 348.9 | 330.2 | 314.8 |
| 25° | 574.6 | 551.5 | 532.7 | 510.7 | 489.8 | 467.8 | 443.6 | 421.6 | 396.3 | 378.6 | 352.2 |
| 27.5° | 678.0 | 656.0 | 630.7 | 602.1 | 581.2 | 548.1 | 516.2 | 488.7 | 459.0 | 431.5 | 401.8 |
| 30° | 810.1 | 778.2 | 751.8 | 724.3 | 682.4 | 650.5 | 613.1 | 575.7 | 534.9 | 507.4 | 462.3 |
| 32.5° | 968.6 | 934.5 | 894.9 | 855.2 | 816.7 | 771.6 | 725.4 | 679.1 | 634.0 | 583.4 | 537.1 |
| 35° | 1162.3 | 1121.6 | 1076.5 | 1033.6 | 974.1 | 925.7 | 867.4 | 803.5 | 752.9 | 694.5 | 636.2 |
| 37.5° | 1418.8 | 1351.7 | 1312.0 | 1266.9 | 1186.6 | 1120.5 | 1055.6 | 991.7 | 902.6 | 840.9 | 758.4 |
| 40° | 1740.2 | 1700.6 | 1635.6 | 1563.0 | 1490.3 | 1403.4 | 1315.3 | 1230.6 | 1127.1 | 1041.3 | 945.5 |
| 42.5° | 2117.7 | 2059.4 | 1993.4 | 1888.8 | 1815.1 | 1712.7 | 1612.5 | 1500.3 | 1373.7 | 1263.6 | 1151.3 |
| 45° | 2472.2 | 2402.8 | 2352.2 | 2247.6 | 2170.6 | 2049.5 | 1928.4 | 1809.6 | 1663.2 | 1521.2 | 1391.3 |
| 47.5° | 2855.2 | 2798.0 | 2714.3 | 2629.6 | 2551.4 | 2414.9 | 2284.0 | 2139.8 | 1985.7 | 1817.3 | 1648.8 |
| 50° | 3192.0 | 3146.9 | 3089.7 | 2987.3 | 2900.3 | 2785.9 | 2631.8 | 2474.4 | 2279.5 | 2112.2 | 1920.7 |
| 52.5° | 3478.2 | 3443.0 | 3362.6 | 3290.0 | 3211.8 | 3104.0 | 2966.4 | 2815.6 | 2605.4 | 2421.5 | 2203.6 |
| 55° | 3816.1 | 3790.8 | 3720.4 | 3675.2 | 3605.9 | 3502.4 | 3373.6 | 3233.9 | 3011.5 | 2811.2 | 2564.6 |
| 57.5° | 4369.8 | 4350.0 | 4288.3 | 4269.6 | 4201.4 | 4111.1 | 3952.6 | 3802.9 | 3543.2 | 3294.4 | 3012.6 |
| 60° | 5286.7 | 5247.0 | 5156.8 | 5110.5 | 4966.4 | 4845.3 | 4639.5 | 4433.6 | 4119.9 | 3802.9 | 3463.9 |
| 62.5° | 6268.5 | 6157.3 | 5985.6 | 5838.1 | 5633.4 | 5423.1 | 5148.0 | 4833.2 | 4465.5 | 4089.1 | 3699.5 |
| 65° | 6797.9 | 6608.6 | 6391.8 | 6157.3 | 5892.0 | 5582.7 | 5236.0 | 4858.5 | 4463.3 | 4066.0 | 3654.3 |
| 66° | 6858.5 | 6644.9 | 6414.9 | 6154.0 | 5859.0 | 5529.9 | 5177.7 | 4781.4 | 4370.9 | 3983.4 | 3571.8 |
| 67.5° | 6782.5 | 6559.1 | 6315.8 | 6026.3 | 5707.1 | 5365.9 | 4996.1 | 4584.4 | 4189.3 | 3796.3 | 3395.7 |
| 70° | 6250.9 | 6028.5 | 5811.7 | 5506.8 | 5166.7 | 4823.3 | 4473.2 | 4013.2 | 3638.9 | 3277.9 | 2921.3 |
| 72.5° | 4991.7 | 4840.9 | 4626.2 | 4365.4 | 4034.1 | 3631.2 | 3339.5 | 2927.9 | 2603.2 | 2253.1 | 1976.9 |
| 75° | 3119.4 | 2906.9 | 2641.7 | 2309.3 | 2056.1 | 1729.2 | 1558.6 | 1246.0 | 1061.1 | 899.3 | 743.0 |
| 77.5° | 1594.9 | 1435.3 | 1249.3 | 1062.2 | 882.8 | 704.4 | 544.8 | 385.2 | 259.8 | 180.5 | 134.3 |
| 80° | 1317.5 | 1176.6 | 1022.6 | 851.9 | 693.4 | 538.2 | 387.4 | 264.2 | 168.4 | 110.1 | 85.9 |
| 82.5° | 1088.6 | 969.7 | 832.1 | 673.6 | 536.0 | 422.7 | 293.9 | 191.5 | 118.9 | 77.0 | 60.5 |
| 85° | 463.4 | 420.5 | 324.7 | 257.6 | 193.7 | 143.1 | 100.2 | 67.1 | 47.3 | 38.5 | 35.2 |
| 87.5° | 19.8 | 22.0 | 20.9 | 16.5 | 12.1 | 12.1 | 11.0 | 8.8 | 8.8 | 8.8 | 8.8 |
| 90° | 0.0 | 0.0 | 0.0 | 0.0 | 0.0 | 0.0 | 0.0 | 0.0 | 0.0 | 0.0 | 0.0 |



REPORT NUMBER: P150525

CATALOG NUMBER: VWM-F04-LED-E1-SL3-HSS

CANDELA DISTRIBUTION (continued):

| | 80° | 81° | 82° | 83° | 84° | 85° | 95° | 105° | 115° | 125° | 135° |
|-------|--------|--------|--------|--------|--------|--------|-------|-------|-------|-------|-------|
| 0° | 172.8 | 172.8 | 172.8 | 172.8 | 172.8 | 172.8 | 172.8 | 172.8 | 172.8 | 172.8 | 172.8 |
| 2.5° | 180.5 | 179.4 | 178.3 | 178.3 | 177.2 | 176.1 | 169.5 | 164.0 | 157.4 | 153.0 | 148.6 |
| 5° | 188.2 | 187.1 | 184.9 | 183.8 | 181.6 | 180.5 | 166.2 | 154.1 | 144.2 | 136.5 | 131.0 |
| 7.5° | 195.9 | 194.8 | 191.5 | 188.2 | 187.1 | 184.9 | 161.8 | 146.4 | 133.2 | 124.4 | 118.9 |
| 10° | 205.8 | 202.5 | 199.2 | 194.8 | 191.5 | 188.2 | 157.4 | 137.6 | 123.3 | 115.6 | 110.1 |
| 12.5° | 220.1 | 214.6 | 209.1 | 203.6 | 199.2 | 193.7 | 155.2 | 129.9 | 115.6 | 106.8 | 101.3 |
| 15° | 236.7 | 228.9 | 222.3 | 215.7 | 208.0 | 202.5 | 150.8 | 123.3 | 109.0 | 100.2 | 93.6 |
| 17.5° | 252.1 | 243.3 | 233.3 | 223.4 | 215.7 | 208.0 | 146.4 | 116.7 | 102.4 | 93.6 | 87.0 |
| 20° | 274.1 | 260.9 | 248.8 | 236.7 | 225.6 | 215.7 | 139.8 | 110.1 | 96.9 | 87.0 | 80.4 |
| 22.5° | 298.3 | 282.9 | 267.5 | 251.0 | 236.7 | 223.4 | 134.3 | 104.6 | 91.4 | 81.5 | 73.7 |
| 25° | 329.1 | 310.4 | 289.5 | 268.6 | 252.1 | 234.4 | 128.8 | 99.1 | 85.9 | 75.9 | 68.2 |
| 27.5° | 372.0 | 345.6 | 322.5 | 296.1 | 270.8 | 251.0 | 124.4 | 94.7 | 80.4 | 70.4 | 62.7 |
| 30° | 430.4 | 391.8 | 355.5 | 326.9 | 297.2 | 268.6 | 120.0 | 89.2 | 75.9 | 64.9 | 56.1 |
| 32.5° | 495.3 | 450.2 | 408.4 | 365.4 | 328.0 | 295.0 | 115.6 | 84.8 | 70.4 | 59.4 | 51.7 |
| 35° | 575.7 | 518.4 | 462.3 | 412.8 | 367.6 | 323.6 | 111.2 | 80.4 | 66.0 | 53.9 | 46.2 |
| 37.5° | 691.2 | 619.7 | 545.9 | 482.1 | 423.8 | 365.4 | 107.9 | 75.9 | 60.5 | 48.4 | 40.7 |
| 40° | 849.7 | 757.3 | 667.0 | 580.1 | 504.1 | 431.5 | 103.5 | 71.5 | 56.1 | 44.0 | 36.3 |
| 42.5° | 1021.4 | 909.2 | 790.3 | 692.3 | 587.8 | 496.4 | 99.1 | 67.1 | 51.7 | 39.6 | 31.9 |
| 45° | 1235.0 | 1095.2 | 951.0 | 817.8 | 690.1 | 572.4 | 94.7 | 62.7 | 46.2 | 35.2 | 27.5 |
| 47.5° | 1468.3 | 1290.0 | 1127.1 | 959.8 | 807.9 | 667.0 | 89.2 | 59.4 | 41.8 | 30.8 | 24.2 |
| 50° | 1708.3 | 1520.1 | 1314.2 | 1123.8 | 943.3 | 761.7 | 83.7 | 53.9 | 37.4 | 27.5 | 19.8 |
| 52.5° | 1967.0 | 1744.6 | 1534.4 | 1297.7 | 1087.5 | 886.1 | 78.1 | 49.5 | 34.1 | 24.2 | 16.5 |
| 55° | 2296.1 | 2047.3 | 1800.7 | 1535.5 | 1282.3 | 1030.3 | 72.6 | 44.0 | 29.7 | 20.9 | 13.2 |
| 57.5° | 2709.9 | 2414.9 | 2112.2 | 1812.9 | 1505.8 | 1219.6 | 68.2 | 38.5 | 25.3 | 17.6 | 11.0 |
| 60° | 3100.7 | 2756.2 | 2389.6 | 2045.1 | 1698.4 | 1364.9 | 61.6 | 34.1 | 22.0 | 14.3 | 11.0 |
| 62.5° | 3303.2 | 2910.3 | 2515.1 | 2135.4 | 1765.5 | 1416.6 | 55.0 | 28.6 | 18.7 | 12.1 | 9.9 |
| 65° | 3253.7 | 2853.0 | 2470.0 | 2086.9 | 1724.8 | 1383.6 | 48.4 | 25.3 | 16.5 | 11.0 | 9.9 |
| 66° | 3182.1 | 2785.9 | 2400.6 | 2036.3 | 1690.7 | 1348.4 | 45.1 | 24.2 | 15.4 | 11.0 | 8.8 |
| 67.5° | 3025.8 | 2642.8 | 2275.1 | 1936.1 | 1597.1 | 1281.2 | 40.7 | 22.0 | 14.3 | 9.9 | 8.8 |
| 70° | 2584.4 | 2236.6 | 1942.7 | 1641.1 | 1364.9 | 1079.8 | 33.0 | 18.7 | 12.1 | 8.8 | 8.8 |
| 72.5° | 1710.5 | 1473.8 | 1277.9 | 1099.6 | 919.1 | 713.3 | 27.5 | 15.4 | 9.9 | 8.8 | 7.7 |
| 75° | 645.0 | 583.4 | 500.8 | 450.2 | 392.9 | 344.5 | 22.0 | 9.9 | 7.7 | 7.7 | 7.7 |
| 77.5° | 114.5 | 105.7 | 93.6 | 85.9 | 79.3 | 72.6 | 17.6 | 6.6 | 6.6 | 7.7 | 7.7 |
| 80° | 77.0 | 71.5 | 64.9 | 59.4 | 55.0 | 49.5 | 12.1 | 5.5 | 6.6 | 6.6 | 7.7 |
| 82.5° | 55.0 | 51.7 | 48.4 | 44.0 | 40.7 | 36.3 | 7.7 | 5.5 | 6.6 | 6.6 | 6.6 |
| 85° | 33.0 | 30.8 | 28.6 | 26.4 | 23.1 | 22.0 | 5.5 | 5.5 | 5.5 | 6.6 | 6.6 |
| 87.5° | 8.8 | 7.7 | 8.8 | 8.8 | 6.6 | 7.7 | 4.4 | 4.4 | 4.4 | 5.5 | 5.5 |
| 90° | 0.0 | 0.0 | 0.0 | 0.0 | 0.0 | 0.0 | 0.0 | 0.0 | 0.0 | 0.0 | 0.0 |



REPORT NUMBER: P150525

CATALOG NUMBER: VWM-F04-LED-E1-SL3-HSS

CANDELA DISTRIBUTION (continued):

| | 145° | 155° | 165° | 175° | 180° |
|-------|-------|-------|-------|-------|-------|
| 0° | 172.8 | 172.8 | 172.8 | 172.8 | 172.8 |
| 2.5° | 146.4 | 146.4 | 144.2 | 147.5 | 147.5 |
| 5° | 126.6 | 126.6 | 125.5 | 126.6 | 126.6 |
| 7.5° | 115.6 | 114.5 | 114.5 | 114.5 | 115.6 |
| 10° | 105.7 | 104.6 | 104.6 | 104.6 | 104.6 |
| 12.5° | 96.9 | 95.8 | 94.7 | 95.8 | 95.8 |
| 15° | 89.2 | 87.0 | 87.0 | 87.0 | 87.0 |
| 17.5° | 82.6 | 80.4 | 79.3 | 79.3 | 79.3 |
| 20° | 75.9 | 72.6 | 72.6 | 72.6 | 72.6 |
| 22.5° | 69.3 | 66.0 | 66.0 | 66.0 | 66.0 |
| 25° | 62.7 | 59.4 | 59.4 | 59.4 | 59.4 |
| 27.5° | 57.2 | 53.9 | 53.9 | 53.9 | 53.9 |
| 30° | 50.6 | 48.4 | 48.4 | 49.5 | 48.4 |
| 32.5° | 46.2 | 42.9 | 42.9 | 44.0 | 44.0 |
| 35° | 40.7 | 38.5 | 38.5 | 38.5 | 38.5 |
| 37.5° | 35.2 | 33.0 | 33.0 | 33.0 | 33.0 |
| 40° | 30.8 | 28.6 | 27.5 | 28.6 | 28.6 |
| 42.5° | 26.4 | 24.2 | 23.1 | 23.1 | 23.1 |
| 45° | 23.1 | 19.8 | 18.7 | 19.8 | 19.8 |
| 47.5° | 18.7 | 16.5 | 16.5 | 17.6 | 17.6 |
| 50° | 14.3 | 14.3 | 15.4 | 17.6 | 17.6 |
| 52.5° | 13.2 | 13.2 | 15.4 | 17.6 | 17.6 |
| 55° | 12.1 | 13.2 | 15.4 | 16.5 | 17.6 |
| 57.5° | 11.0 | 13.2 | 15.4 | 16.5 | 16.5 |
| 60° | 11.0 | 12.1 | 14.3 | 16.5 | 16.5 |
| 62.5° | 9.9 | 11.0 | 13.2 | 15.4 | 15.4 |
| 65° | 9.9 | 11.0 | 13.2 | 15.4 | 15.4 |
| 66° | 9.9 | 11.0 | 13.2 | 15.4 | 15.4 |
| 67.5° | 9.9 | 11.0 | 13.2 | 15.4 | 15.4 |
| 70° | 9.9 | 11.0 | 13.2 | 14.3 | 14.3 |
| 72.5° | 8.8 | 9.9 | 12.1 | 14.3 | 14.3 |
| 75° | 8.8 | 9.9 | 12.1 | 14.3 | 14.3 |
| 77.5° | 8.8 | 9.9 | 12.1 | 14.3 | 14.3 |
| 80° | 8.8 | 9.9 | 12.1 | 13.2 | 14.3 |
| 82.5° | 7.7 | 9.9 | 11.0 | 13.2 | 13.2 |
| 85° | 7.7 | 8.8 | 11.0 | 12.1 | 13.2 |
| 87.5° | 6.6 | 7.7 | 8.8 | 11.0 | 11.0 |
| 90° | 0.0 | 0.0 | 0.0 | 0.0 | 0.0 |

(END OF REPORT)